

# Ord.-Nr.: 80214

Tiffany Soldering Station 80 W



## ST 802



MADE IN GERMANY

TIFFANY SOLDERING STATION 80 WATT

Available Accessories:

### Technical Data:

- Operating Voltage: 230V~ 50 Hz
- Output voltage 24V~
- Performance: 80W
- Temperatur approximately 150 - 450°C



### Delivery capacity:

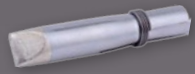
- Soldering Station ST 802
- Soldering Iron 24V/80W
- Iron stand
- Soldering Tip, internal heated, 6,5 mm drill
- On-control trough illuminated power switch
- Heater control trough LED
- Pot socket
- Instruction manual



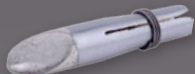
Ord.-Nr.: 80160  
(PREMIUM) CHISEL SHAPE 9.1  
TIFFANY TIP



Ord.-Nr.: 80161  
(PREMIUM) WEDGE SHAPE  
7.2 X 11 (36°)  
TIFFANY TIP



Ord.-Nr.: 80162  
(PREMIUM) CHISEL SHAPE 9.5  
TIFFANY TIP



Ord.-Nr.: 80163  
(PREMIUM) WEDGE SHAPE  
9.5 X 17,1 (35°)  
TIFFANY TIP



Ord.-Nr.: 80164  
(PREMIUM) CHISEL SHAPE 5.0  
TIP

### STAR TEC PRODUCTS

Hützelstr. 18 / 20

D - 28329 Bremen / Germany

Tel.: +49 - (0) 421 - 467-6934

Fax: +49 - (0) 421 - 467-5517

